

NOTES

*** Material:**

Body: LCP, Glass Filled UL 94-0 Rated, Color: Black;
 Ejector: Nylon66, Glass Filled UL 94V-0 Rated, Color: Ivory;
 Latch: LCP, Glass Filled UL 94V-0 Rated; Color: Black.
 Contact: Brass
 Contact Plating: Gold Plating Over Nickel On Contact Area
 Tin Plating On Solder Tail;
 Harpoon: Prospor Bronze
 Harpoon Plating: Tin plating over Nickel.

*** Mechanical:**

Retention Force-Terminal: 350 Grams MIN. Per;
 Insertion Force: 40~120 Grams/Contact pair
 Unmating Force: 20 Grams (Min)/Contact pair

*** Electrical Specification:**

Contact Resistance: 30 Milliohms MAX. Initial;
 Insulation Resistance: 1000 Megohms MIN. AT 500 VDC
 Withstand Voltage: 500 V AC,

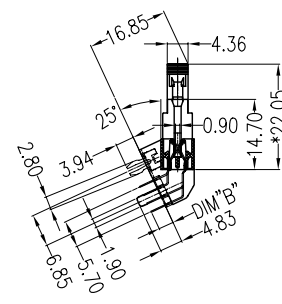
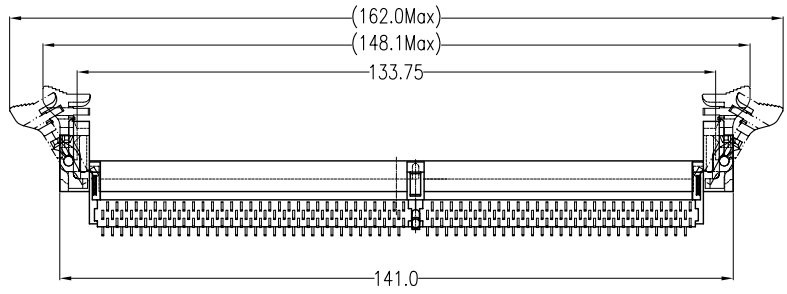
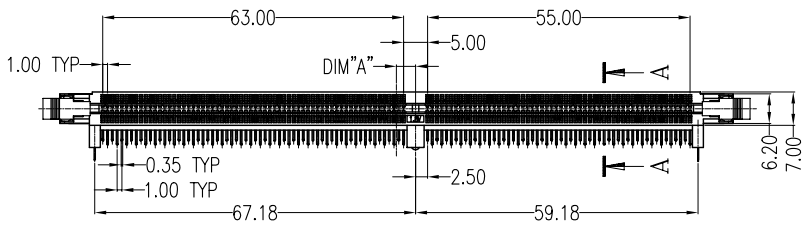
*** Environmental:**

Operating Temperature: -55°C TO +105°C

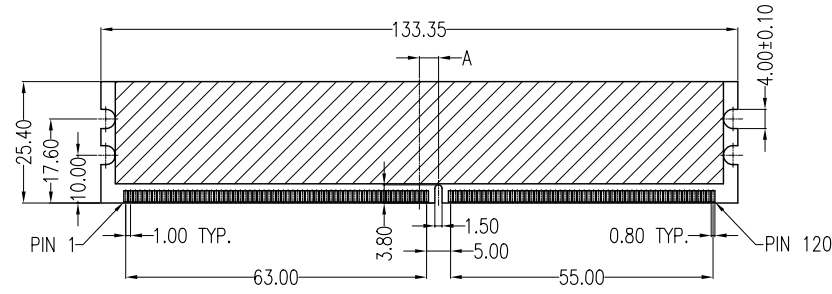
*** How To Order:**

WDDRS-2240A2L11B3UW

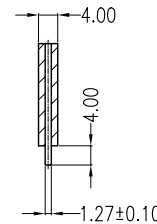
- W: Winning Mark
- U: Lead Free
- 3: Metal posts
- B: Brass
- 1: 1.8V 2: 2.5V 3: Open
- 1: Black
- L: LCP
- 2: Long Pin (3.20mm)
- 1: Short Pin (2.75mm)
- Gold A: Flash
- No. of Contacts
- 2: 25D 9: 90D
- Series NO.



SECT:A-A

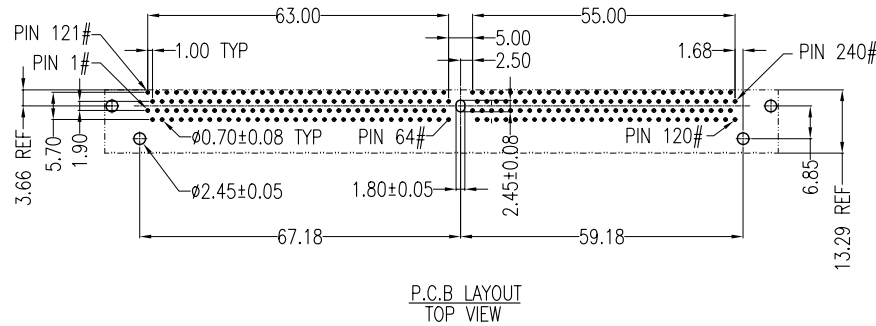


RECOMMENDED MODULE LAYOUT



Dimension Type	A
2.5V	3.00mm
1.8V	4.00mm
OPEN	5.00mm

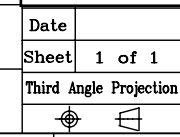
Dimension Type	B
Long Pin	3.20mm
Short Pin	2.75mm



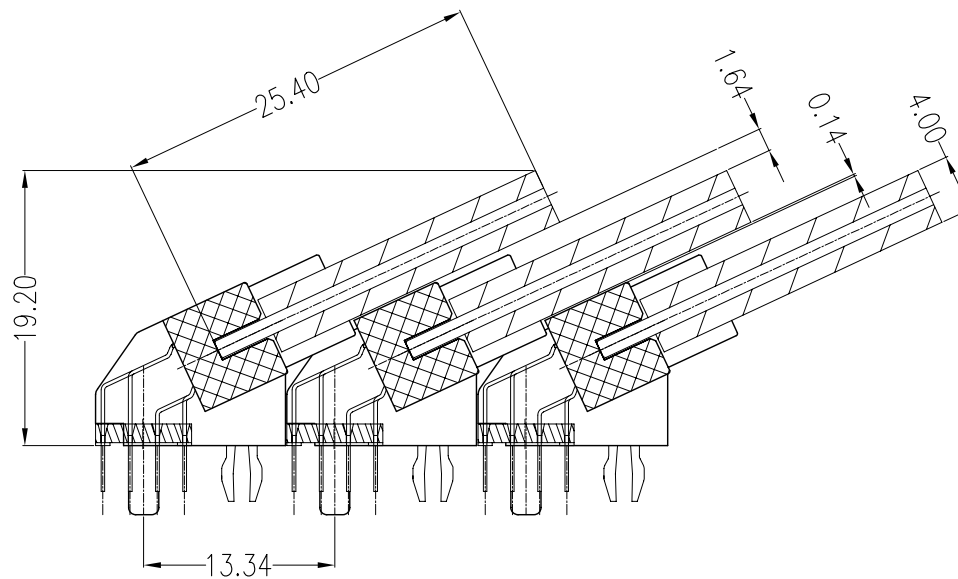
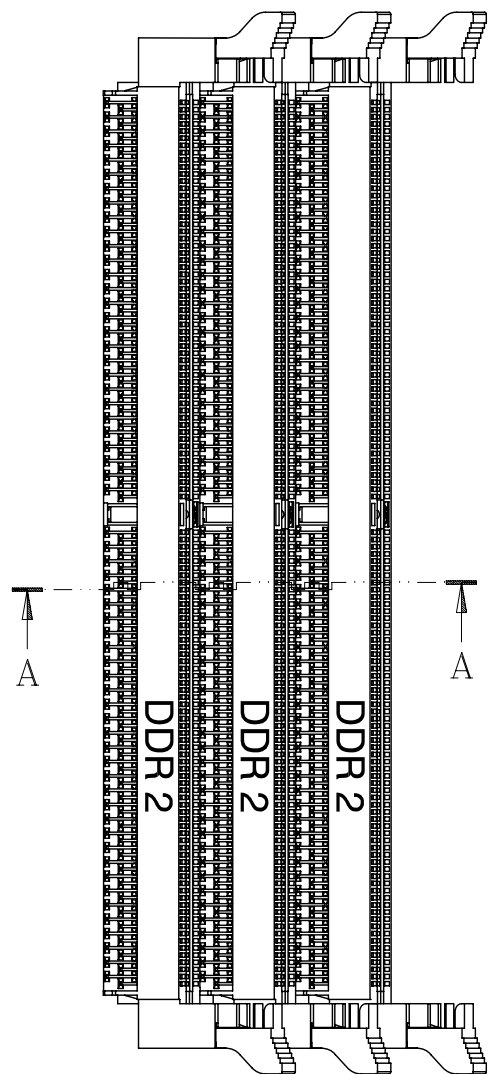
P.C.B LAYOUT TOP VIEW

REV	Units	mm	Scale	2:3	Drawing By	Data	Date	Sheet	1 of 1	Title	Third Angle Projection	Drawing No.	WDD2S-240PS-AN-W046	REV	C
					Andy					DDR2-240 Pins 25D Connector					
					Reviewed By	Data									
					Lulu										
					Approval By	Data									
					Richard										

Dimension Type	Tolerance
.X	~ ±0.38
.XX	~ ±0.25
.XXX	~ ±0.20
Angle	~ ± 3°



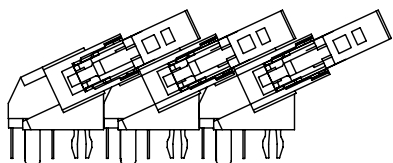
Date		Title	DDR2-240 Pins 25D Connector
Sheet	1 of 1		
Drawing No.	WDD2S-240PS-AN-W046	REV	C



SECT:A-A(2:1)

MINIMUM SOCKET TO SOCKET SPACING

WITH A 4.00 WIDE MODULE BOARD, A SOCKET TO SOCKET SPACING OF 13.34 WILL LEAVE APPROXIMATELY 0.14 OF CLEARANCE BETWEEN THE MODULE AND THE NEXT SOCKET BODY. THIS SPACING MAY OR MAY NOT BE SUITABLE DEPENDING ON YOUR MINIMUM GAP REQUIREMENTS.



REV				Drawing By		Data			
Units	mm	Scale	1:1	Andy		Data			
Tolerance Unless Otherwise Specified				Reviewed By		Data			
.X	~	±0.38		Lulu		Data			
.XX	~	±0.25		Approval By		Data			
.XXX	~	±0.20		Richard		Data			
Angle	~	± 3°							
						Date		Title	DDR2-240 Pins 25D Connector
						Sheet	1 of 1		
						Third Angle Projection		Drawing No.	WDD2S-240PS-AN-W046
								REV	C