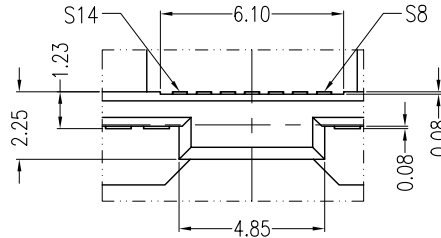
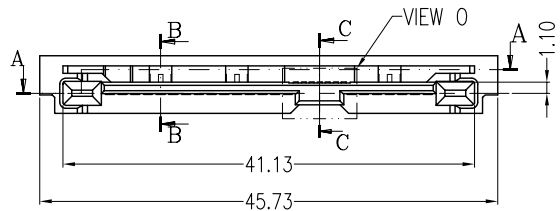


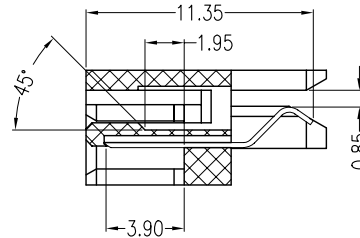
SECT A-A



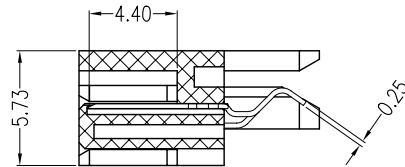
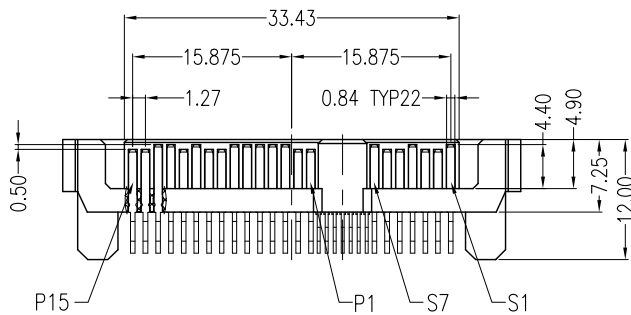
VIEW O
SCALE 3:1



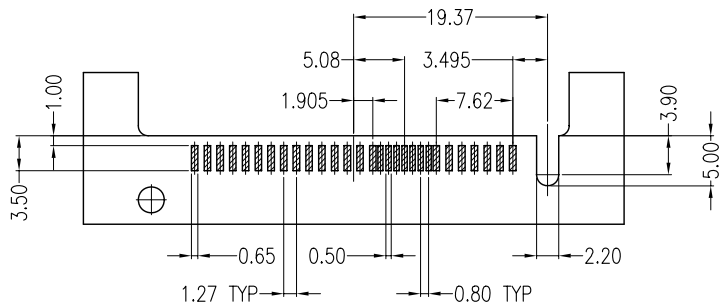
VIEW O



SECT B-B
SCALE 2:1



SECT C-C
SCALE 2:1



P.C.B LAYOUT (T=1.00mm)

NOTES:

***Material**

Housing: LCP, UL 94V-0 rated, Color: Black;
Contact: Brass;
Plating: Gold plating over Nickel on contact area; Tin plating on solder tail.

***Mechanical**

Insertion Force: 25N max.
Withdrawal Force: 5N min.
Durability: 500 cycles

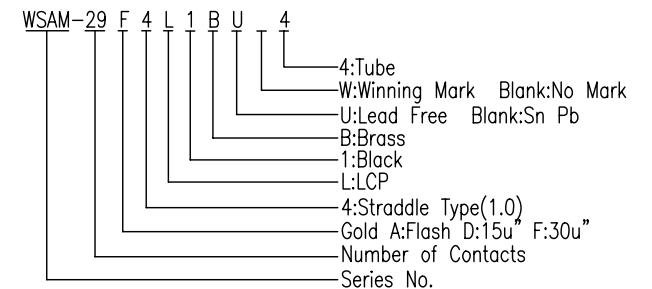
***Electrical Specification**

Current Rating: 1 Ampere per contact;
Contact Resistance: 30 Milliohms max.
Insulation Resistance: 1000 megohms min.
Dielectric Withstanding Voltage: 500 V AC.

***Environmental**

Operating Temperature: 0°C to +55°C

***How to order**



REV			Drawing By		Data			
	Units	mm	Scale	5:4	Stacy			
	Tolerance Unless Otherwise Specified				Reviewed By		Data	
	.X	~	±0.38	Roger				
	.XX	~	±0.25	Approval By		Data		
	.XXX	~	±0.20	Richard				
	Angle	~	± 3°					
	Date			Sheet		1 of 1		
	Third Angle Projection		Title		SAS 29P Straddle Type Male(1.0)			
	Drawing No.		WSAM-29PS-AN-N137		REV	B		