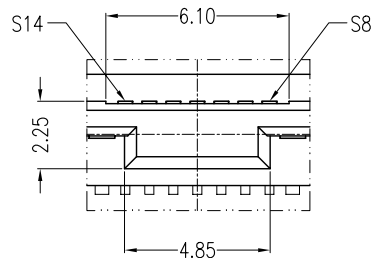
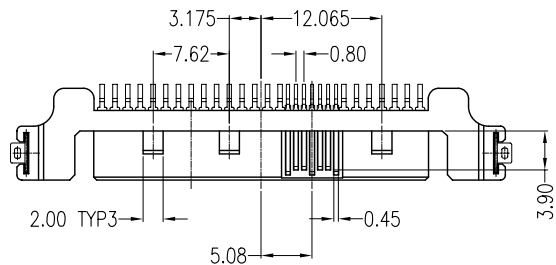


A

A



NOTES:

***Material**

Housing: LCP, UL 94V-0 rated, Color: Black;
 Contact: Brass;
 Plating: Gold plating over Nickel on contact area; Tin plating on solder tail.
 Harpoon: Phosphor Bronze;
 Plating: Tin plating over Nickel.

***Mechanical**

Insertion Force: 25N max.
 Withdrawal Force: 5N min.
 Durability: 500 cycles

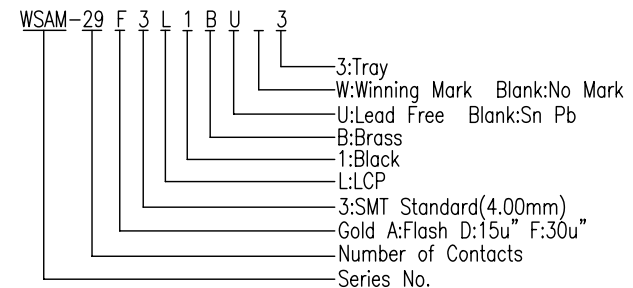
***Electrical Specification**

Current Rating: 1 Ampere per contact;
 Contact Resistance: 30 Milliohms max.
 Insulation Resistance: 1000 megohms min.
 Dielectric Withstanding Voltage: 500 V AC.

***Environmental**

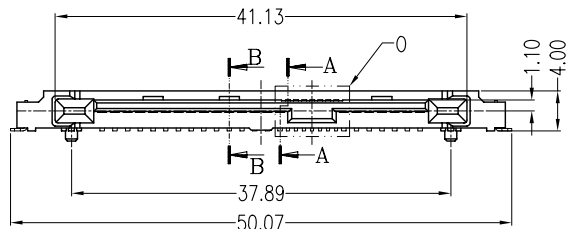
Operating Temperature: 0°C to +55°C

***How to order**

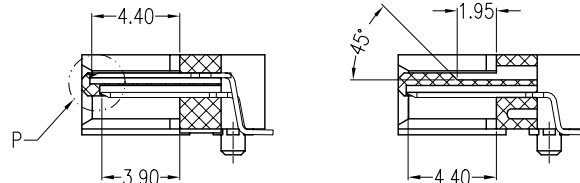


B

B



VIEW O
SCALE 3:1

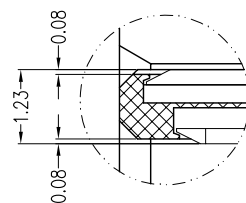
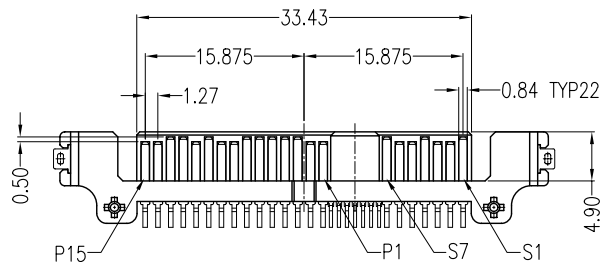


SECT A-A
SCALE 2:1

SECT B-B
SCALE 2:1

C

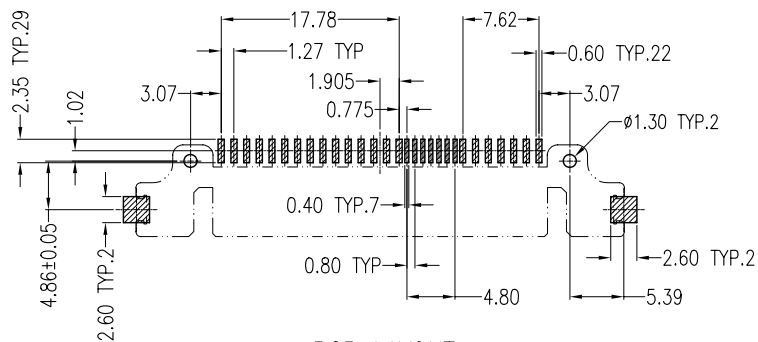
C



VIEW P
SCALE 6:1

D

D



PCB LAYOUT
TOP VIEW

REV			Drawing By Stacy		Date			
Units	mm	Scale	5:4	Reviewed By Roger		Date		
Tolerance Unless Otherwise Specified				Approval By Richard		Date		
.X	~	±	0.38	Date		Title SAS 7+15+7P SMT Type (Standard) Male	Drawing No. WSAM-29PS-AN-N121	REV
.XX	~	±	0.25	Sheet	1 of 1			
.XXX	~	±	0.20	Third Angle Projection				
Angle	~	±	3°					