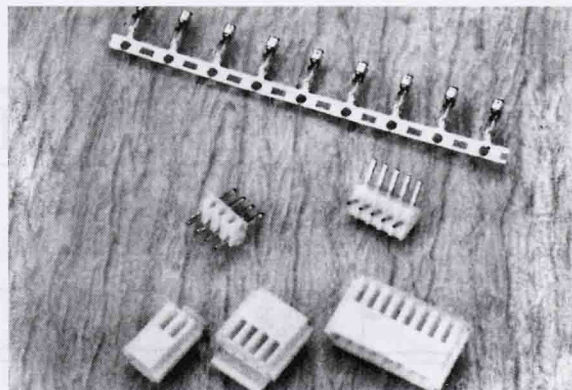


## SPECIFICATION

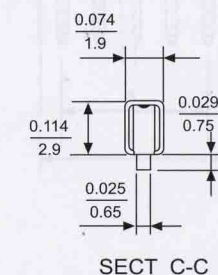
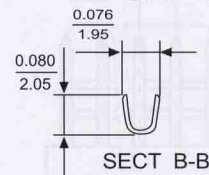
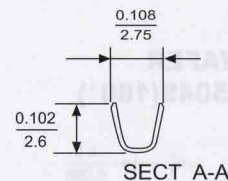
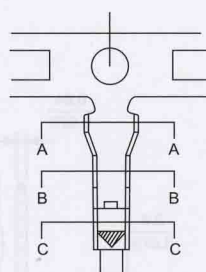
Poles: 2-20  
 Voltage rating: AC, DC 250V  
 Current rating: AC, DC, 2.5A  
 Withstand voltage: 1500V AC/min.  
 Insulation resistance: 1000M  $\Omega$ /min.  
 Temperature range: -25°C ~ +85°C  
 Applicable PC board thickness: 0.031~0.063" (0.8~1.6mm)  
 Contact resistance: Initial value/10m  $\Omega$  max.  
 After environmental testing/20m  $\Omega$  max.



## TERMINAL

Part No: 2508T  
 Applicable wires: AWG#22-28  
 Material: Phos. Bronze (Brass)  
 Finish: Tin/plated  
 Hardness: H  
 Thickness: 0.2mm

## TERMINAL 2508T



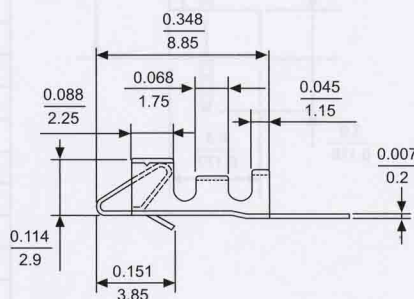
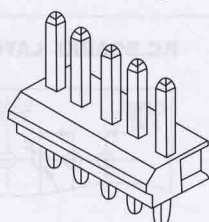
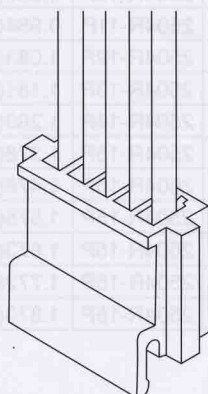
## HOUSING

Part No: 2508H  
 Poles: Available in 2 Through 16, 18 and 20 circuits  
 Material: Nylon 66, UL 94V-0

## WAFER

Part No: 2508S(180°)  
 Poles: Available in 2 Through 16, 18 and 20 circuits  
 Material: Nylon 66, UL 94V-2

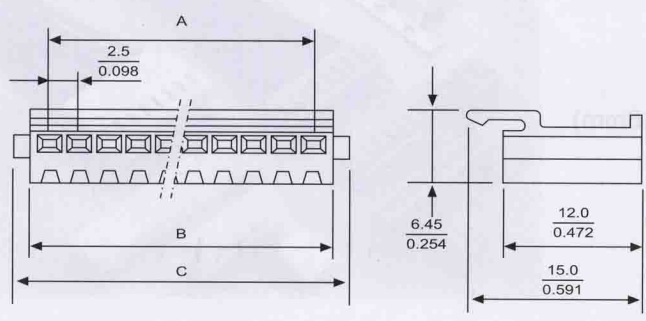
Dimension:  $\frac{\text{Inch}}{\text{mm}}$



# 0.098" (2.50 mm) Pitch Board to Wire Connectors

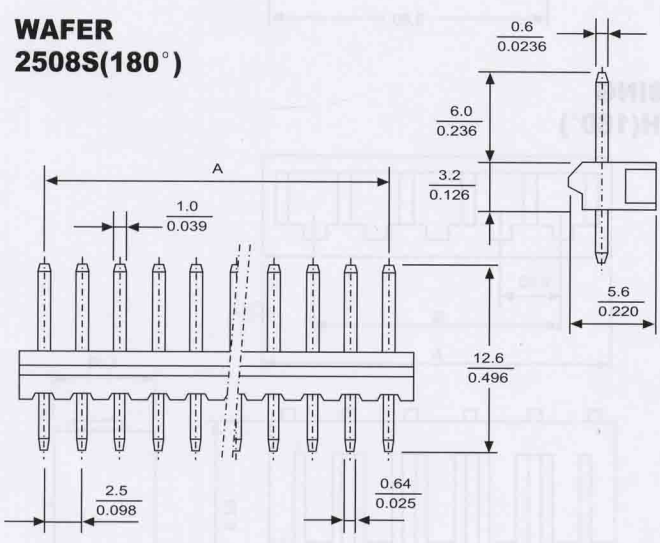
2508 Series

## HOUSING 2508H



POLES	PART NO.	Dimension in.(mm)		
		A	B	C
2	2508H-2P	0.098(2.5)	0.224(5.7)	0.343(8.7)
3	2508H-3P	0.197(5.0)	0.323(8.2)	0.441(11.2)
4	2508H-4P	0.295(7.5)	0.421(10.7)	0.539(13.7)
5	2508H-5P	0.394(10.0)	0.520(13.2)	0.638(16.2)
6	2508H-6P	0.492(12.5)	0.618(15.7)	0.736(18.7)
7	2508H-7P	0.591(15.0)	0.717(18.2)	0.835(21.2)
8	2508H-8P	0.689(17.5)	0.815(20.7)	0.933(23.7)
9	2508H-9P	0.787(20.0)	0.913(23.2)	1.031(26.2)
10	2508H-10P	0.886(22.5)	1.102(25.7)	1.130(28.7)
11	2508H-11P	0.984(25.0)	1.110(28.2)	1.228(31.2)
12	2508H-12P	1.083(27.5)	1.209(30.7)	1.327(33.7)
13	2508H-13P	1.181(30.0)	1.307(33.2)	1.425(36.2)
14	2508H-14P	1.280(32.5)	1.406(35.7)	1.524(38.7)
15	2508H-15P	1.378(35.0)	1.504(38.2)	1.622(41.2)
16	2508H-16P	1.476(37.5)	1.602(40.7)	1.720(43.7)
18	2508H-18P	1.673(42.5)	1.799(45.7)	1.917(48.7)
20	2508H-20P	1.870(47.5)	1.996(50.7)	2.114(53.7)

## WAFER 2508S(180°)



POLES	PART NO.	Dimension in.(mm)
		A
2	2508S-2P	0.098(2.5)
3	2508S-3P	0.197(5.0)
4	2508S-4P	0.295(7.5)
5	2508S-5P	0.394(10.0)
6	2508S-6P	0.492(12.5)
7	2508S-7P	0.591(15.0)
8	2508S-8P	0.689(17.5)
9	2508S-9P	0.787(20.0)
10	2508S-10P	0.886(22.5)
11	2508S-11P	0.984(25.0)
12	2508S-12P	1.083(27.5)
13	2508S-13P	1.181(30.0)
14	2508S-14P	1.280(32.5)
15	2508S-15P	1.378(35.0)
16	2508S-16P	1.476(37.5)
18	2508S-18P	1.673(42.5)
20	2508S-20P	1.870(47.5)

