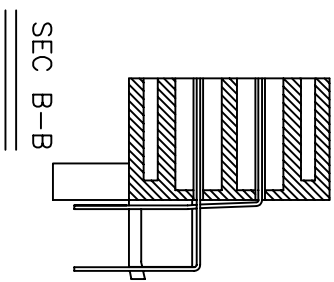
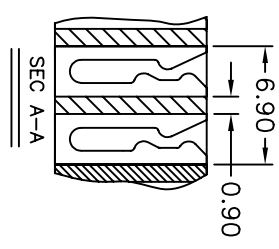
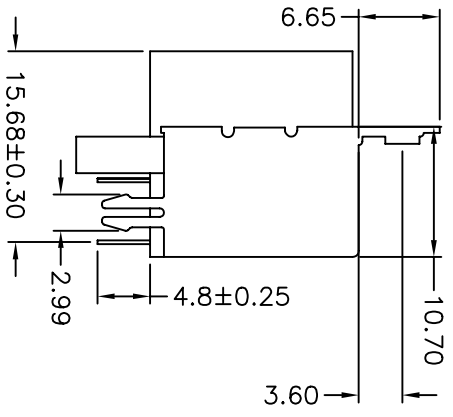
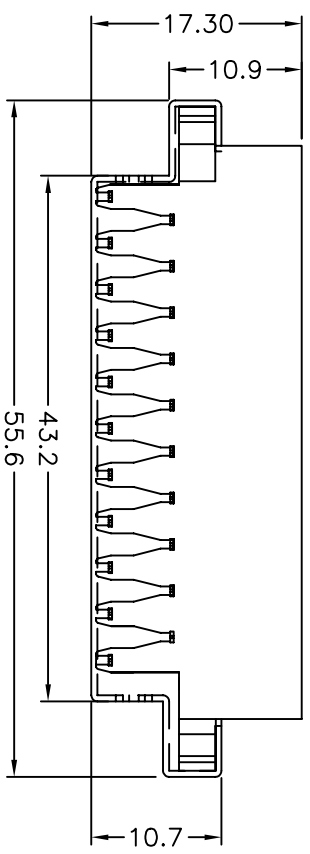
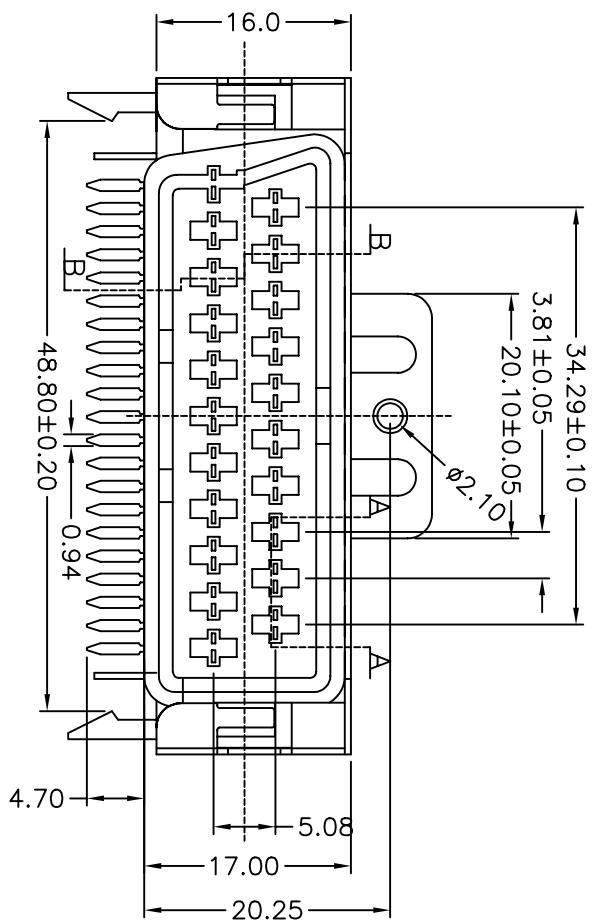
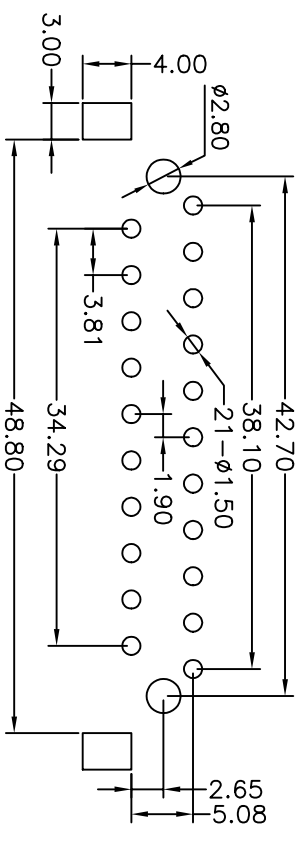


REV.	NOTES	DATE
A	RELEASED	2004/10/20



- NOTES:
- MATERIALS
 - Insulator: Pc
 - Contact: Brass 0.3T
 - Material sheel: SPCC 0.5T
 - Contact Plating: TIN Plated
 - SPECIFICATIONS
 - Current Rating: 5Amp
 - Dielectric Strength: 1000V AC for one minute
 - Insulator Resistance: 5000M Ohms Min.(at 500V DC)
 - Operation Temperature: -55°C to +105°C



RECOMMEND P.C BOARD LAYOUT

DIMENSIONS TOLERANCE		METRIC	
0 = ±.3		.00 = ±.15	
.000 = ±.XXX		.0000 = ±.	
ANG = ±2°			
單位 (UNITS)	mm	數量 (QTY)	N/A
材料 (M'T'L)	SEE NOTE	處理 (FINISH)	SEE NOTE
繪圖 (DRAW)		圖名 (NAME)	90度母座有柱有孔錫 PC加鐵殼 (通孔)
設計 (DE'N)		料號 (PART NUMBER)	ASC+0350-40C9
審核 (CHK)		圖號 (DRAW NUMBER)	RASC035040C9
核准 (APP'D)		圖檔 (FILE NAME .DWG)	E:GCT/A/SC/03
		比例 (SCALE)	1/1
		圖紙 (SHEET)	A4
		頁次 (SHEET)	1
		版本 (REV.)	A