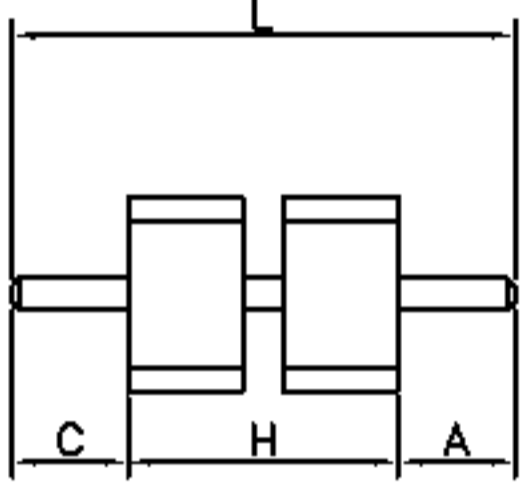
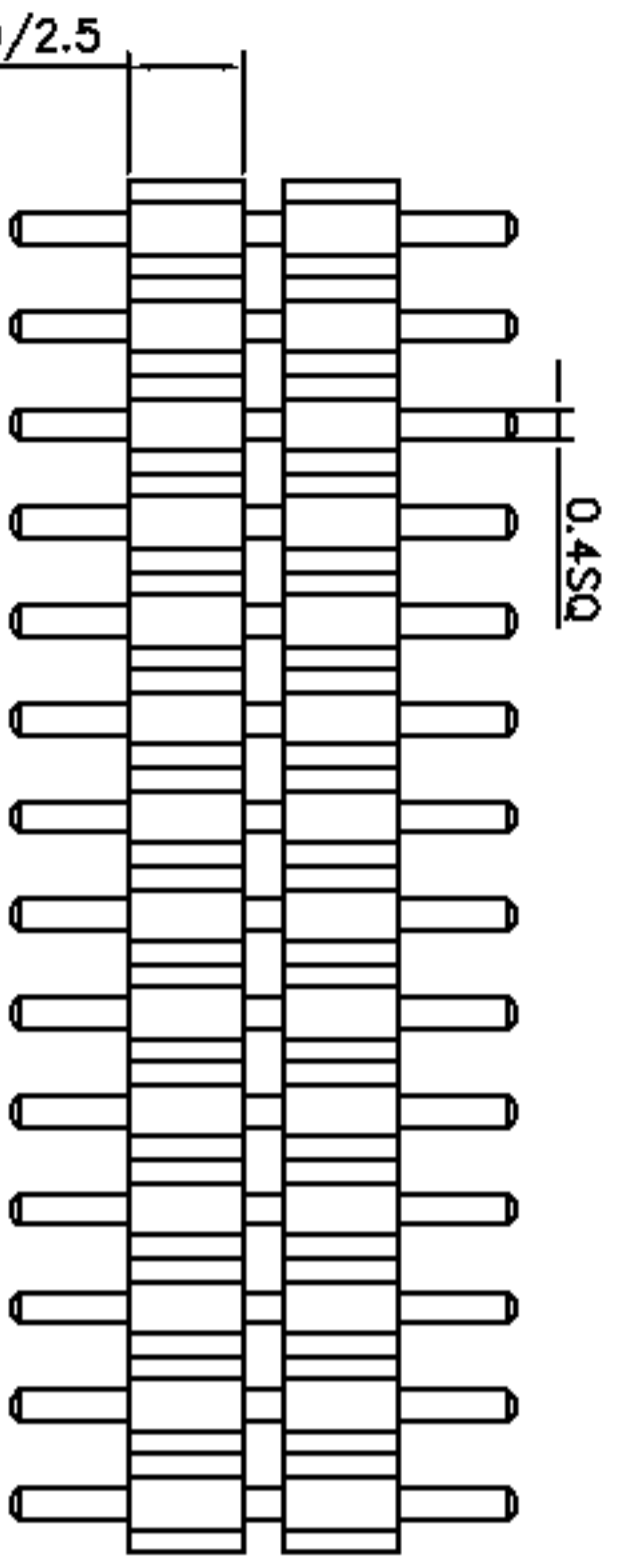
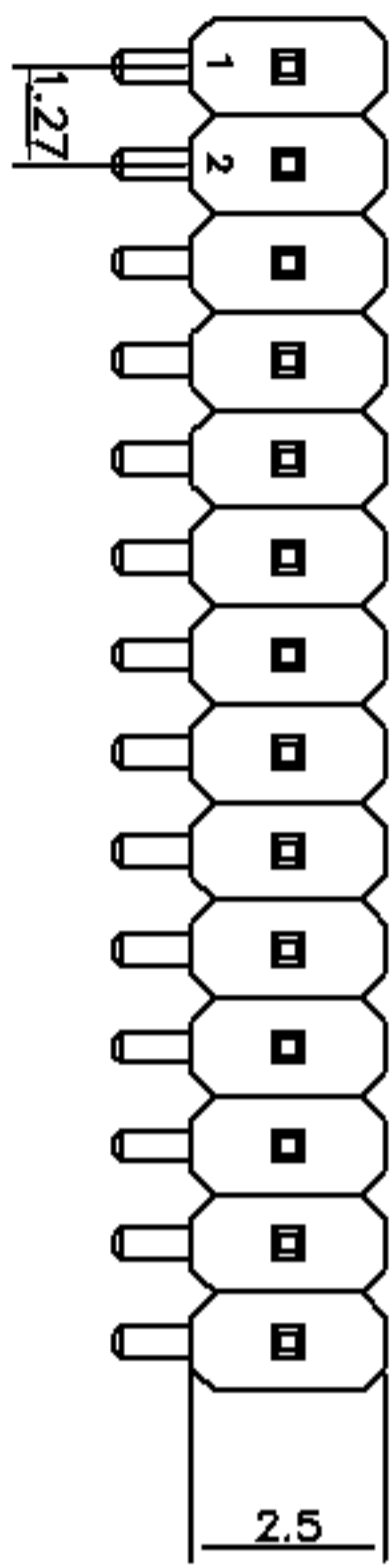


A			
	新版图		
	/	2011.09.07	L2M



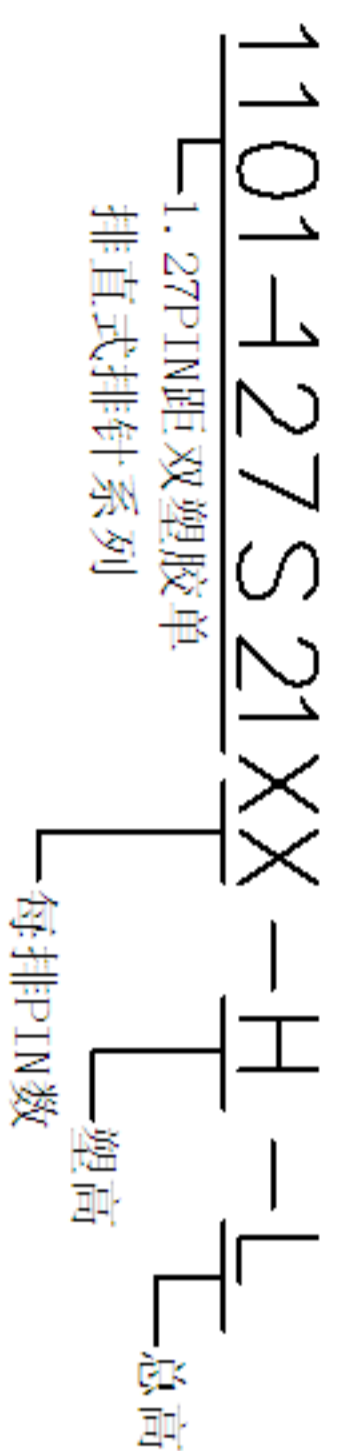
L、H、A、C的尺寸可依客户要求订做



PCB Layout

Specification:

- Current Rating: 1 Ampere
- Insulation Resistance : 1000M ohms Min.
- Dielectric Withstanding : 300V AC
- Contact Resistance: 20m ohms Max.
- Operating temperature: -40° C to +105° C
- Material:
- Cotnact: Brass, Gold Flash or per Require
- Housing: Nylon6T UL 94V-0



TOLERANCE		ANGLE	
TOL			
ON	0.05		
.XXX =	0.15	1°	
XX =	0.20	2°	
X -	0.30		

DRAWN	YSH	DATE	2011.09.07	 武汉宇恒电子有限公司 WUHAN YUHENG ELECTRONIC CO., LTD
CHECKED		DATE		
CLIENT APPROVED		DATE		TITLE:
				排针系列-1.27PIN距-单排 双塑胶-直式
		REQ NO		
		CLIENT P/N		
		UNIT :	SCALE: free	
		FILE NO. :	YH20120526A001	