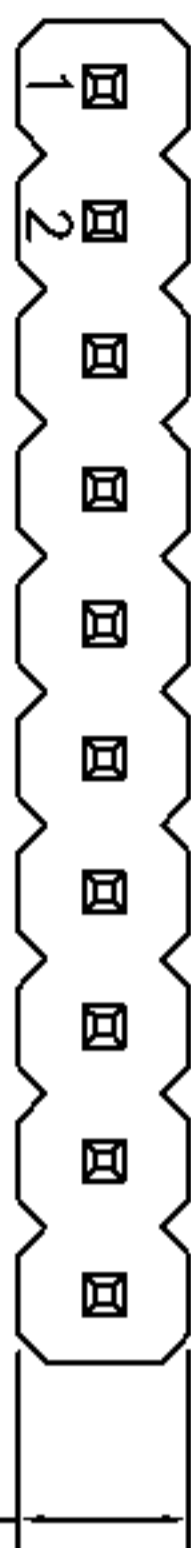
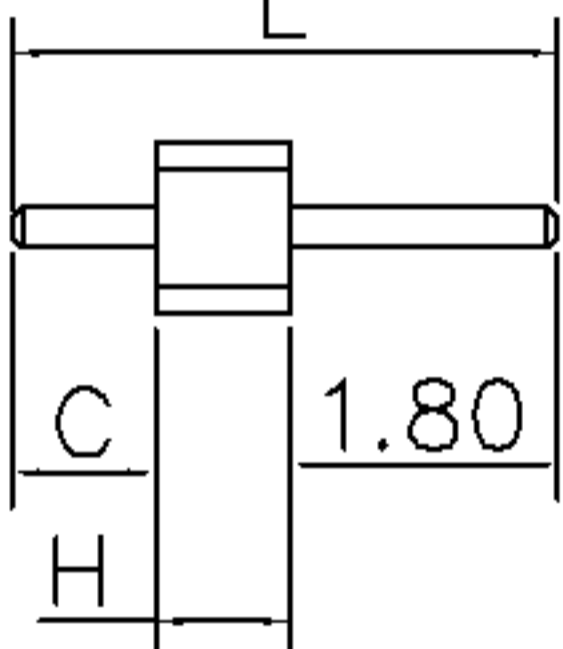
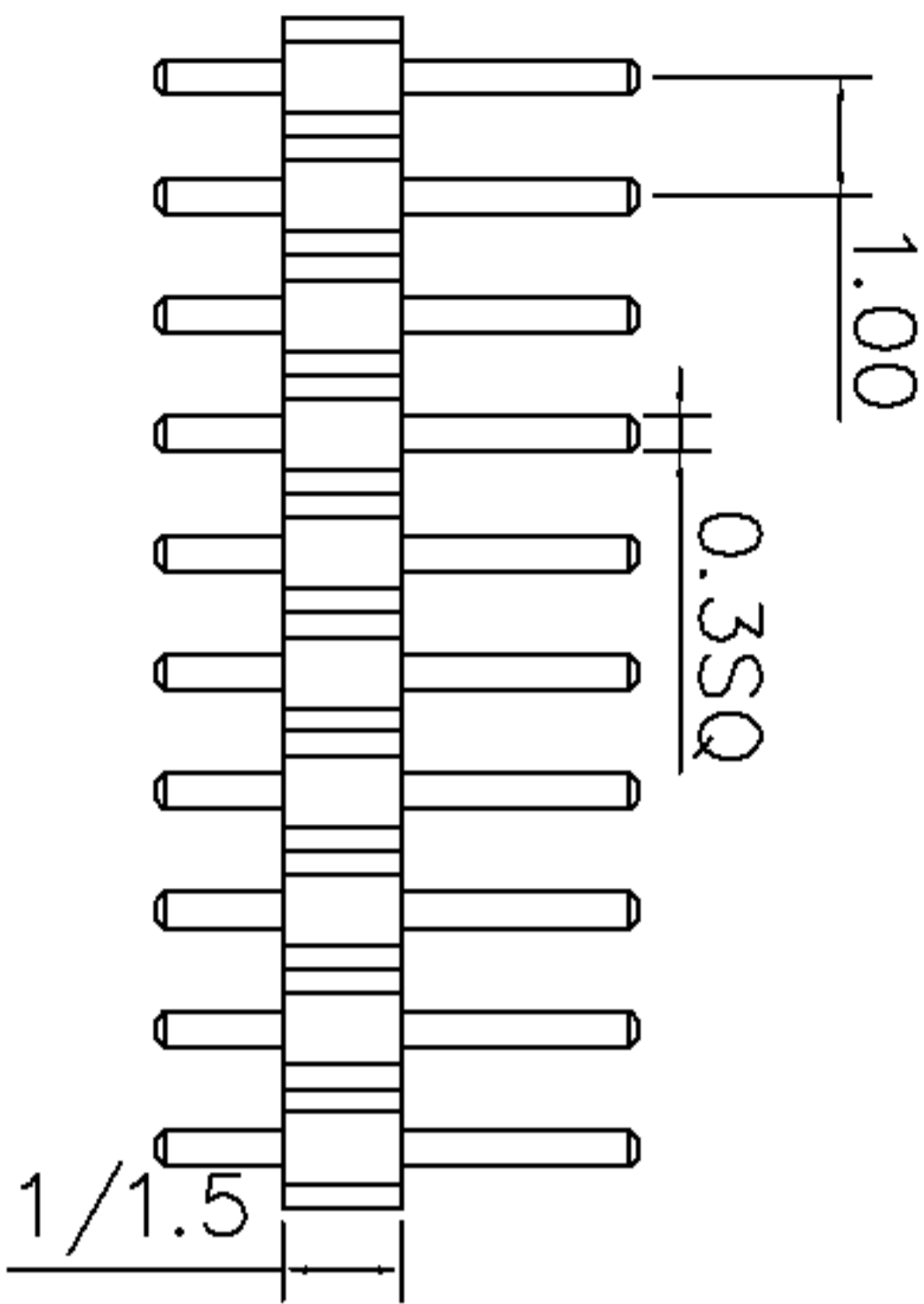


A	新版图	/	2012.05.23
			LZW



1.27



H、L、C的尺寸可依客户要求订做

Technical Data:

Material:

Contact Material: Brass

Insulator Material: PA6T+30%GF

Electrical:

Current rating: 0.75Amps/Contact max.

Contact resistance:  $\leq 20$  mohms/Contact

Insulation resistance:  $\geq 1000$  Mohms at V=100V

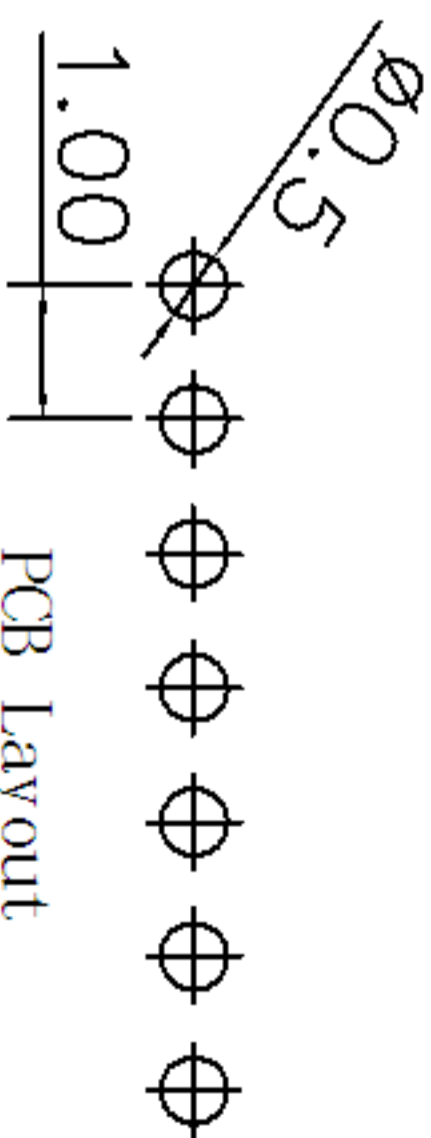
Withstanding Voltage: 300V AC/Minute

Mechanical:

Operating Temperature: Gold plated:  $-55^{\circ}\text{C} \sim 105^{\circ}\text{C}$

Tin plated:  $-40^{\circ}\text{C} \sim 105^{\circ}\text{C}$

Soldering Temperature:  $260^{\circ}\text{C}$  10s Max.



PCB Layout

1101-400S11XX-H-L  
 1.00PIN距单塑胶单  
 推直插排针系列

每排PIN数

塑高

总高

TOLERANCE

TOL	ANGLE
ON	
.XXX±	0.05
XX±	0.15
X+	0.20
X±	0.30

DRAWN	DATE
LZW	2012.05.23

武汉宇恒电子有限公司  
 WUHAN YUHENG ELECTRONIC CO., LTD

CHECKED DATE

TITLE:

排针系列-1.00 PIN距-单排-单塑料

CLIENT APPROVED	DATE	REQ NO
		CLIENT P/N
		UNIT: mm
		SCALE: free
		FILE NO.: YH20120601A001