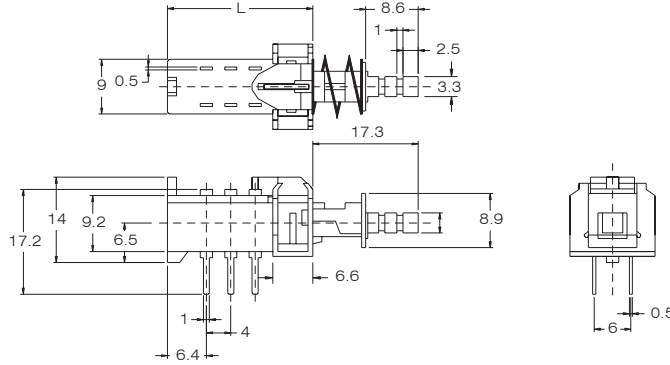


SPECIFICATIONS

RATING : AC 0.5A/100V, AC 0.2A/250V DC 1A/25V
 CONTACT RESISTANCE : 50mΩ at 1KHz
 INSULATION RESISTANCE : 100MΩ min at 500V DC
 DIELECTRIC STRENGTH : 1,000V AC / 1 minute
 WORKING TEMPERATURE RANGE : -20°C ~ +70°C
 OPERATING LIFE: 10,000 cycles
 OPERATING FORCE: 250 ± 100gf(2P2T). 350 ± 100gf (4P2T)

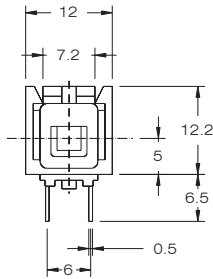
POLE

POLE	2	4	6
L(mm)	24.5	36.5	48.5

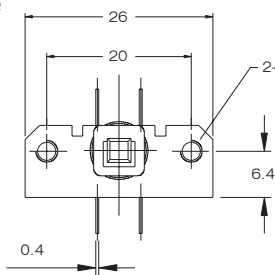


FRAME TYPE

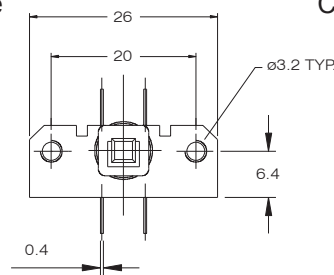
S Type



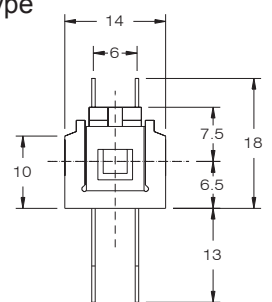
M Type



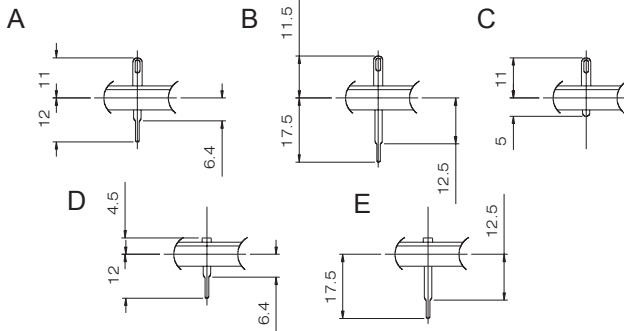
H Type



C Type



TERMINAL TYPE



OPERATION	L: LOCK N: NONLOCK	IL: INTERLOCK R: RESET
TIMING	S: SHORTING N: NONSHORTING	
TRAVEL	2: 2.5MM 4: 4MM	
IL and RESET		

Multi-key type is in the next page.

Interlock(lock release)	When a key is depressed,the other key having previously been locked is released and the depressed key is locked.
Self-lock(latching)	Operation independent from other keys. A key is locked when it is depressed, and released when depressed again.
Non-lock(momentary)	A key is held depressed while it is being pressed down,and released when the pressing force is eliminated.
Reset	Operation for releasing the key locked in the interlock mode. A key previously locked is released when this reset key is depressed,and locked again when the key is released.This mode is available only in the switch with 0, 2 and 4 poles.

HOW TO ORDER



□ = none
 H = RoHS Compliant