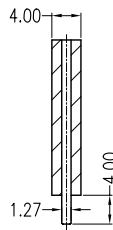
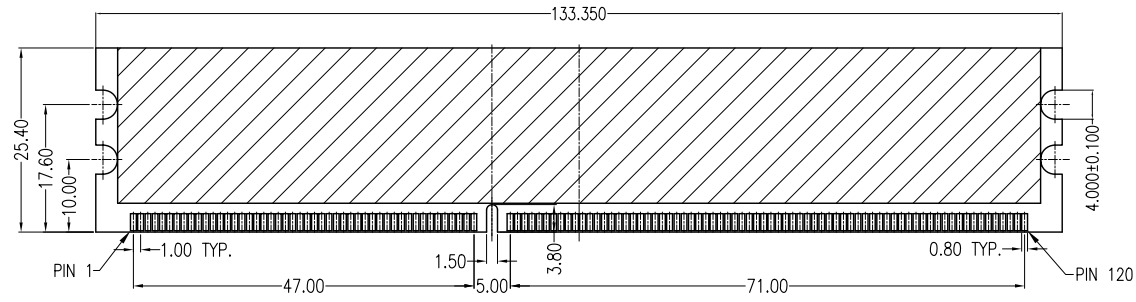


SECT:A-A  
SCALE:2:1

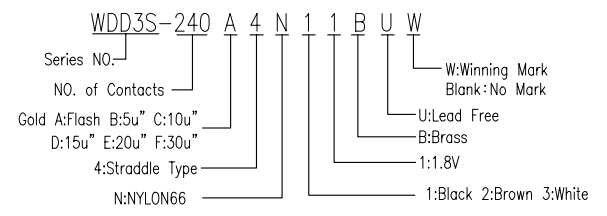


RECOMMENDED MODULE LAYOUT

**NOTES**

- \* **MATERIAL:**  
BODY: Nylon66+20%~30%G.F, UL 94V-0 RATED  
COLOR: Black  
EJECTOR: Nylon66+30%G.F,UL 94V-0 RATED  
COLOR: Ivory  
CONTACT: Brass  
CONTACT PLATING: Gold Plating Over Nickel On Contact  
Area Tin Plating On Solder Tail
- \* **MECHANICAL:**  
RETENTION FORCE-TERMINAL: 300 Grams Min. Per  
INSERTION FORCE: 35 lb. Max.  
UNMATING FORCE: 14 Grams Min. Per Pin Pair
- \* **ELECTRICAL SPECIFICATION**  
CONTACT RESISTANCE: 30 Milliohms Max. Initial  
INSULATION RESISTANCE: 1000 Megohms Min.  
WITHSTAND VOLTAGE: 500 V AC, AT 500 VDC
- \* **ENVIRONMENTAL:**  
OPERATING TEMPERATURE: -55°C TO +105°C

**\*How To Order**



REV				Drawing By		Data	
Units	mm	Scale	1:1	Reviewed By		Data	
Tolerance Unless Otherwise Specified				Approval By		Data	
.X	~	±0.38		Date		Title	
.XX	~	±0.25		Date		Title	
.XXX	~	±0.20		Date		Title	
Angle	~	± 3°		Date		Title	
				Third Angle Projection		Title	
				Drawing No.		Title	
				REV		A	