

2

3

4

5

6

7

8

A

A

B

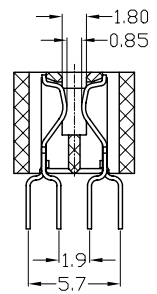
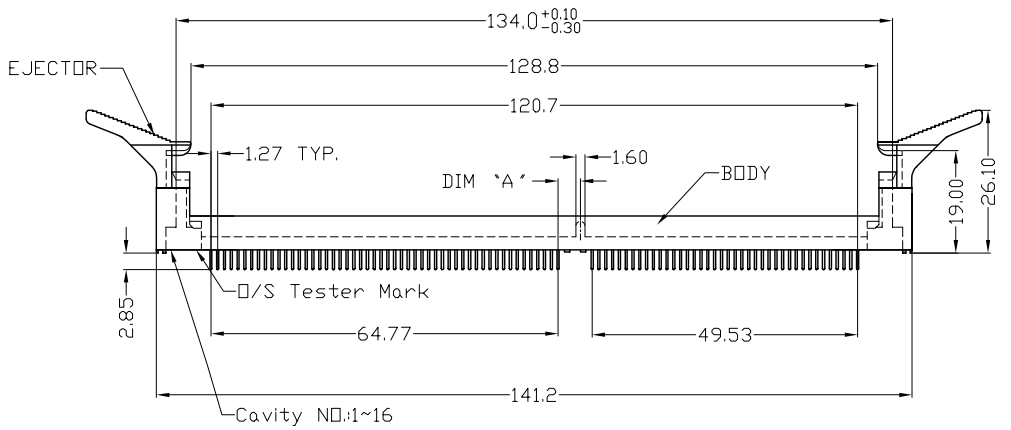
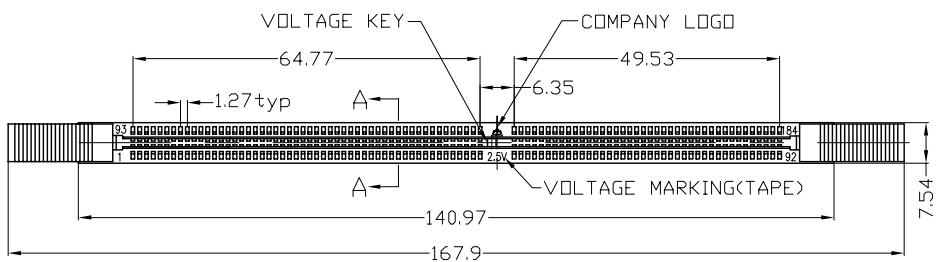
B

C

C

D

D



SECT A-A
SCALE 3:1

NOTES

***Material**

Body: Nylon66,Glass Filled. UL 94-0 Rated.
 Color: Black. CAV. NO.: 01~08.
 Ejector: Nylon66,Glass Filled. UL 94V-0 Rated.
 Color: Black. CAV. NO.:1~16.
 Contact: Phosphor Bronze or Brass.
 Contact Plating: Gold Plating Over Nickel on Contact Area. Tin Plating on Solder Tail.

***Mechanical**

Normal Force: 160 Grams.
 Insertion Force: 4 DZ. Max. Per Mated Pair.
 Withdrawal Force: 30 Grams Min. Per Mated Pair.

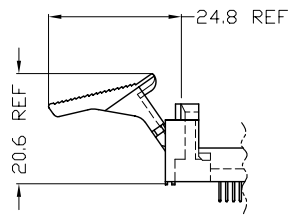
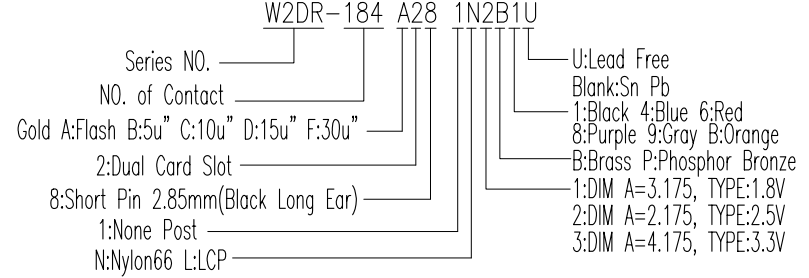
***Electrical Specification**

Voltage Rating: 150V AC.
 Current Rating: 1 AMP Max.
 Contact Resistance: 30 Milliohms Max. Initial.
 Insulation Resistance: 1000 Megohms Min.
 Dielectric Withstanding Voltage: 500V AC. at 500V DC one Minute Hold.

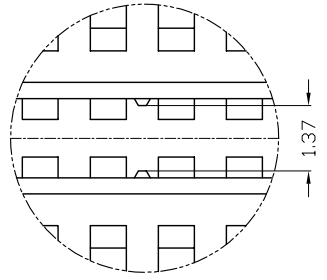
***Environmental**

Operating Temperature: -55°C to +105°C.

***How to Order**



EJECTOR SHOWN
IN OPEN POSITION



VIEW C
SCALE 10:1

Unit: mm

Part Number	Dim 'A'
W2DR-184-A28-1N1B1U	3.175 (1.8V)
W2DR-184-A28-1N2B1U	2.175 (2.5V)
W2DR-184-A28-1N3B1U	4.175 (3.3V)

REV	Units	mm	Scale	Drawing By	Date	Title		Drawing No.		REV
				Jerry		Sheet	1 of 1	Title	DDR 184P DIP 2.85mm	
				Roger						
				Richard						

1 2 3 4 5 6 7 8