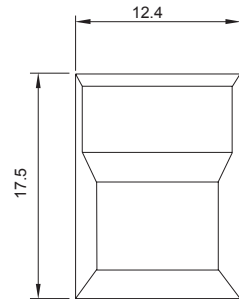
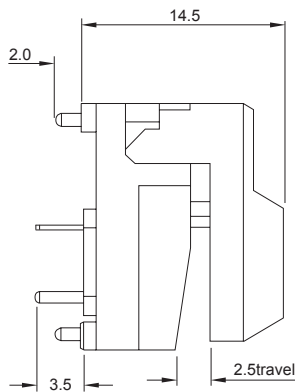
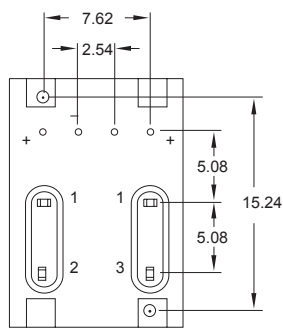


SP86 Illuminated Snap Acting Pushbutton Switch

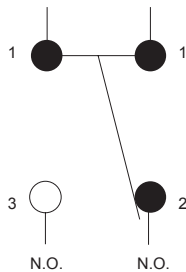


SPECIFICATIONS

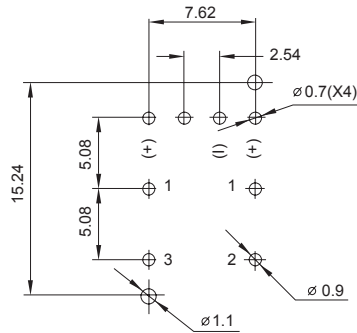
CIRCUIT	: SPDT
CURRENT RATING	: 12mA
VOLTAGE RATING	: 24 VDC
TEST VOLTAGE	: 150V
CONTACT RESISTANCE	: 50 mΩ Max (initial)
INSULATION RESISTANCE	: 100 MΩ min.
OPERATING FORCE	: 170gf ± 50gf
TOTAL TRAVEL	: 2.5mm ± 0.5mm
OPERATING LIFE	: 500,000 cycles min.
SOLDER SPECIFICATION	: 260°C for 3 seconds
FUNCTION	: Momentary
OPERATING TEMPERATURE	: -10°C ~ +60°C



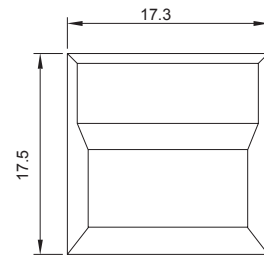
(SP86-A)



SPDT CONTACT CONFIGURATION



P.C.B. Mounting Holes

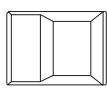
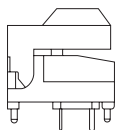


(SP86-B)

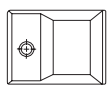
HOW TO ORDER

S P 8 6

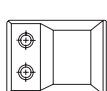
CAP STYLES



A1



A2



A3



B1



B2



B3

CAP COLORS

- 1 = RED
- 2 = YELLOW
- 3 = GREEN
- 4 = WHITE
- 5 = BLACK
- 6 = ORANGE
- 7 = BLUE
- 9 = GREY
- 10 = TRANSPARENT

LEFT LED

- LED COLORS
- 0 = WITHOUT LED
- 1 = RED
- 2 = YELLOW
- 3 = GREEN
- 7 = BLUE

RIGHT LED

RoHS code

- = none
- H = RoHS Compliant

INDEX

TOGGLE

ROCKER

SLIDE

PUSHBUTTON

DIP

TACT