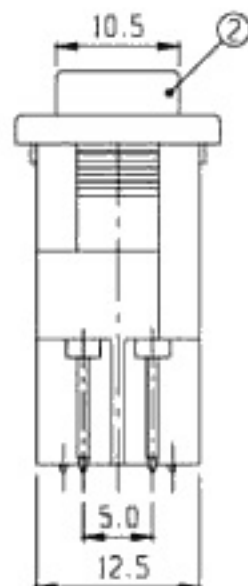
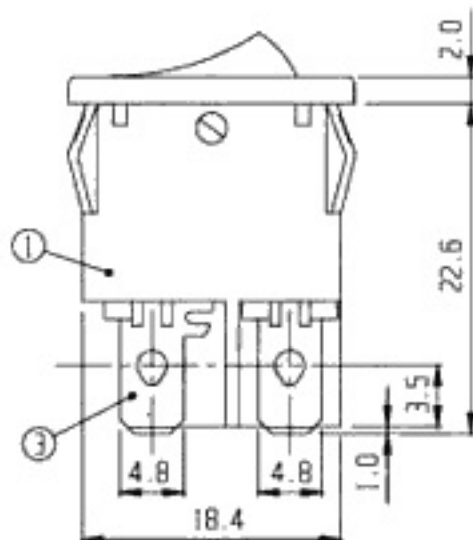
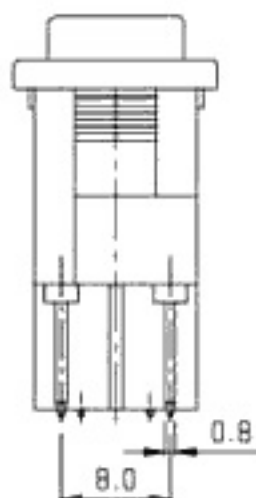


RoHS  
Compliance



5	CONTACT	CuBe	2	Ag PLATED					
3	TERMINAL	BRASS	4	Ag PLATED	4	CONTACT POINT	Ag	4	
1	FRAME	NYLON	1		2	KNOB	NYLON	1	
NO	PART	MATERIAL	QTY	REMARKS	NO	PART	MATERIAL	QTY	REMARKS

ISSUED

SPECIFICATION

TITLE: ROCKER SWITCH (2P1T)

RATING: AC 125V 10A / AC 250V 6A  
 CONTACT RESISTANCE: <math>< 30\text{m}\Omega</math> (1KHz, 10mA)  
 INSULATION RESISTANCE: >500 $\Omega$  (DC1000V)  
 WITHSTAND VOLTAGE: 1000V AC for 1min.  
 OPERATION FORCE: REFER ATTACH SPECIFICATION  
 SWITCHING LIFE: REFER ATTACH SPECIFICATION

MODEL NO: RSA-2104-( C )

TOLERANCE	UNIT: MM	DWN.	<i>ms</i>
UP TO 1.0: $\pm$ 0.1	SCALE: 2:1	CHK'D.	<i>ms</i>
1.0 TO 10.0: $\pm$ 0.2	VERSION: 01	APPD.	<i>ms</i>
OVER 10.0: $\pm$ 0.3	DRWG NO:		

